



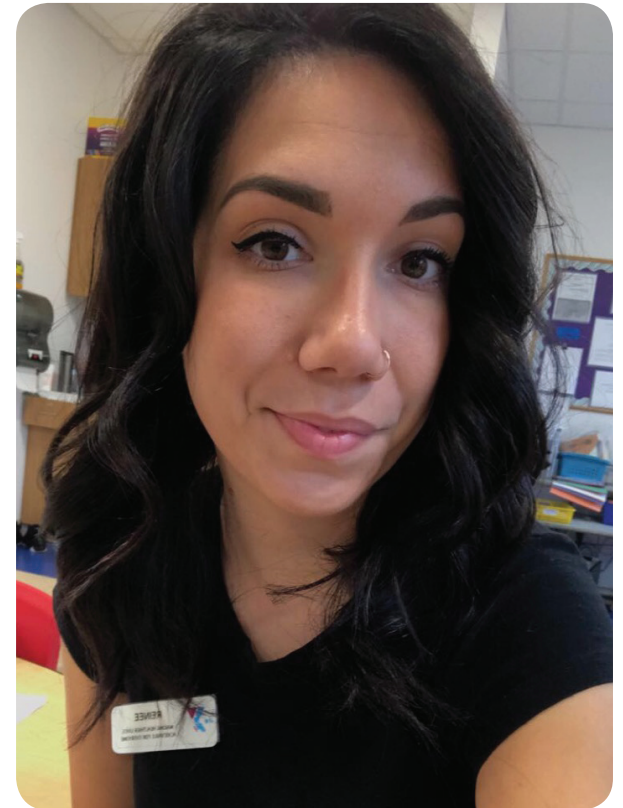
FOR YOUTH DEVELOPMENT®  
FOR HEALTHY LIVING  
FOR SOCIAL RESPONSIBILITY

# THANK YOU FOR GOING THE EXTRA MILE

LAWRENCE EMPLOYEE OF THE MONTH

## REINEE GUILMETTE

- Always willing to help whenever needed
- Great with Families
- Role model for other teachers
- She is very supportive
- Helps out and is second in command when we need her
- Reinee will do whatever it takes to help children grow



**REINEE GUILMETTE**  
Teacher